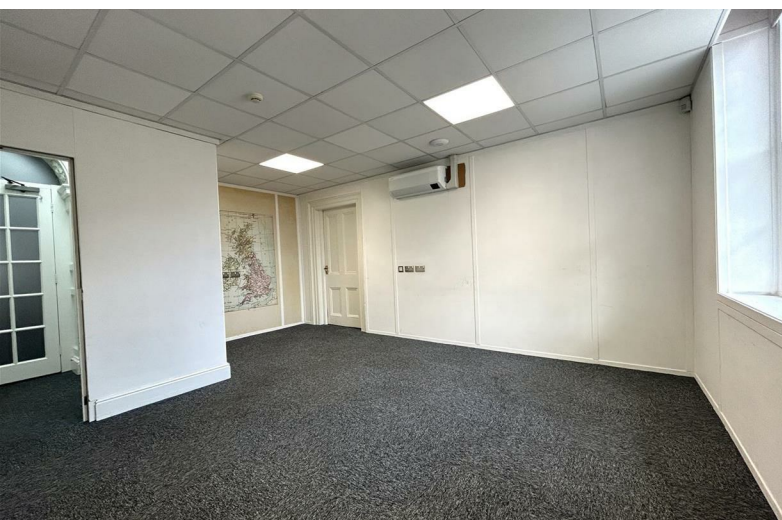


01202 683444

Orchard Plaza, 41 High Street
Poole, Dorset, BH15 1EG

www.quayliving.co.uk



Suite A 32 West Street

Poole, BH15 1LD

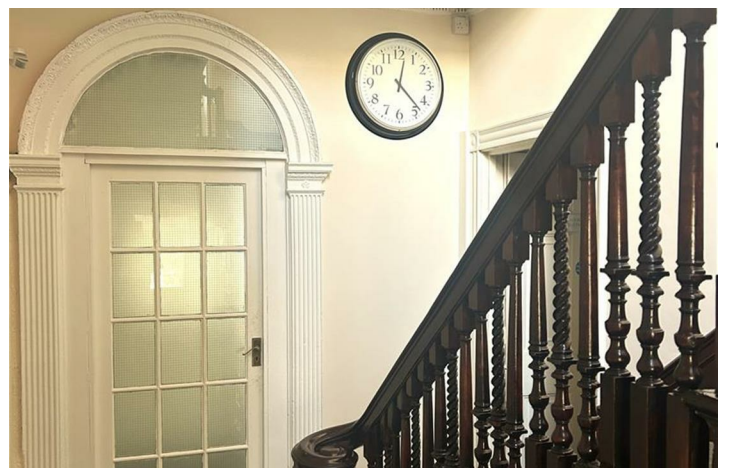
£12,000



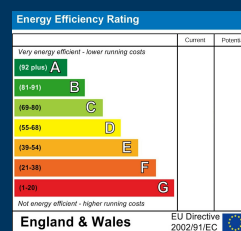
Suite A – Ground floor suite of two rooms comprising 51.6 sq m

A centrally located, air-conditioned office suite available now on flexible terms. Communal facilities. Rent £1,000pcm to include electricity, lighting and air-conditioning and TWO allocated parking spaces. The only additional outgoings are business rates (if applicable) and wifi. Apply now to Quay Commercial, 01202 683444

Want more space? Suite C is also available within the same building. Enquire for more details.







Agent Note: Whilst every care has been taken to prepare these sales particulars, they are for guidance purposes only. All representations including descriptions, dimensions and photos are given, in good faith and are believed to be correct, but any intending purchaser should not rely on them as statements or representations of fact but must satisfy themselves as to their correctness. Appliances and central heating systems have not been checked by Quay Living or their employees and we recommend that purchasers instruct a qualified person to check all appliances / service before legal commitment.

01202 683444
Orchard Plaza, 41 High Street
Poole, Dorset, BH15 1EG
www.quayliving.co.uk

